

PROPOSED NEW FIRE STATION, SHEFFIELD PARKWAY



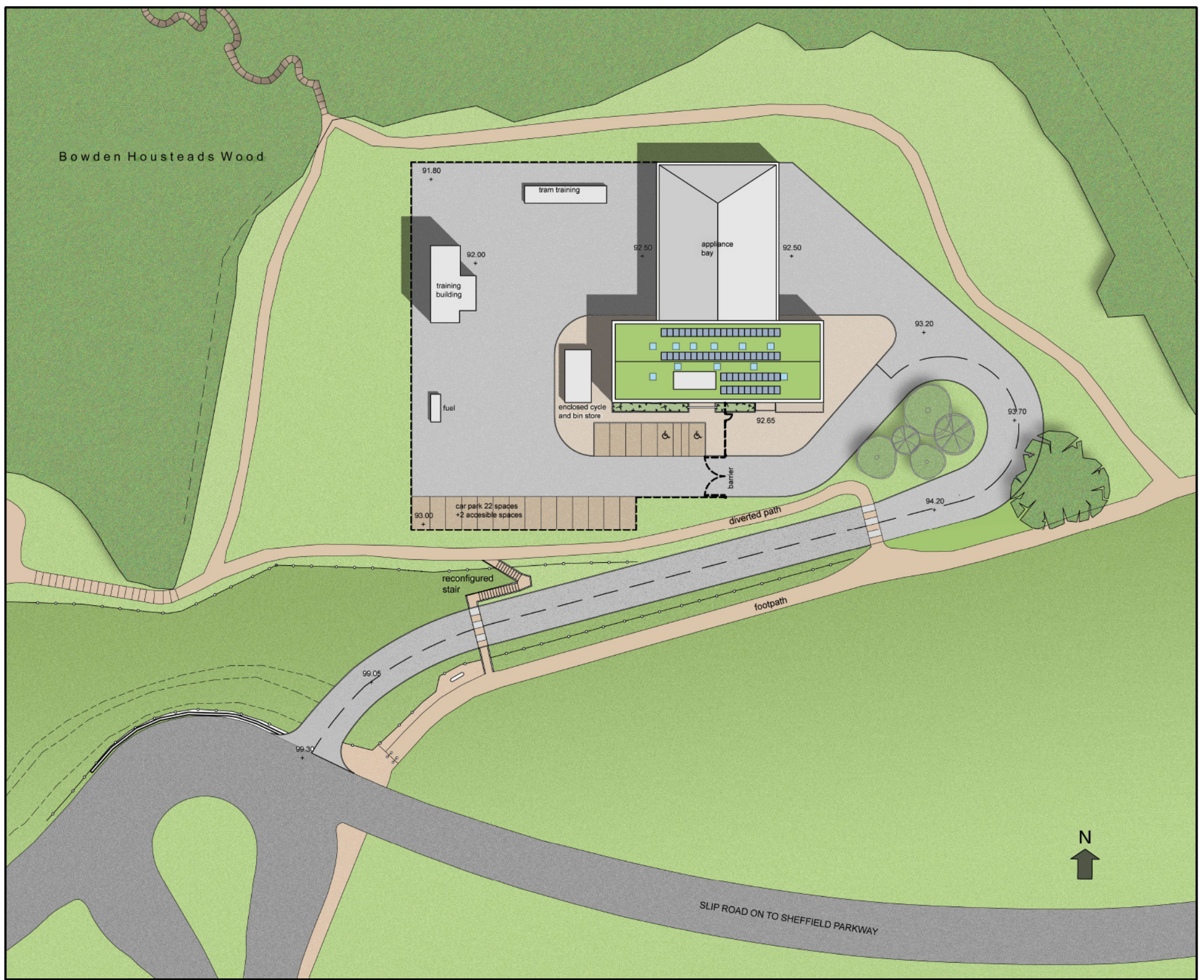
South Yorkshire Fire & Rescue regularly reviews all its fire station locations to ensure they are in the best place to provide the quickest emergency response to the public. A review in 2012, supported by extensive computer modelling, found that new sites off the Sheffield Parkway and at Birley Moor would be better-placed and more cost-effective than the ageing stations at Darnall, Mansfield Road and Mosborough.

These boards illustrate the proposals for the new fire station at Parkway. The building has been designed to fit in to its setting on the edge of Bowden Housteads Woods. It is constructed of natural materials with its main accommodation block being clad in untreated cedar boarding.

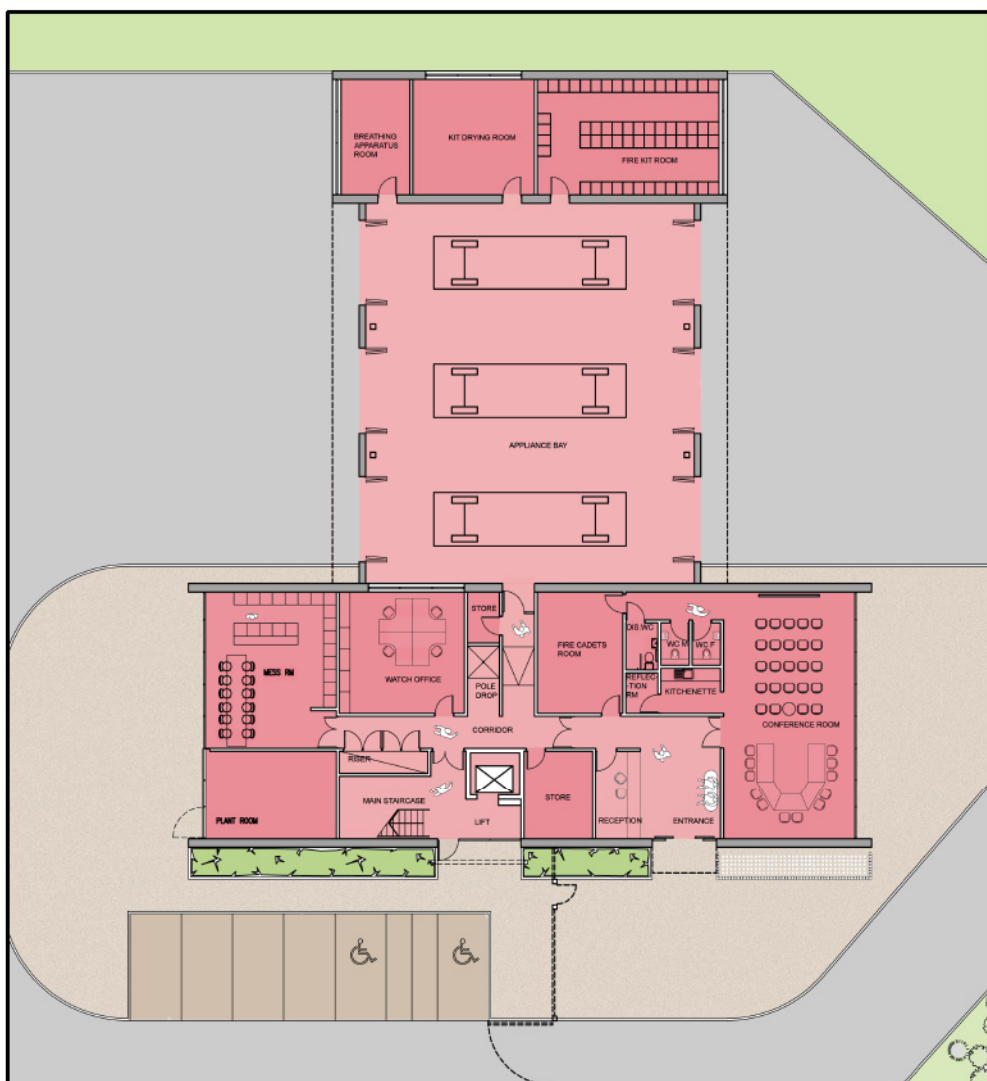
A fire station must first and foremost be designed to enable rapid unhindered response in the event of an emergency. The site's location, with its direct link to a roundabout on the Parkway, enables vehicles to easily access both the east and south of the city as well as the city centre. The site is laid out to ensure that exiting vehicles have a clear route out unimpeded by arriving vehicles. Internally the building is efficiently planned with all rooms associated with fire fighting directly accessible from the fire appliance garage. This appliance bay can accommodate up to three fire engines. Dormitories and fitness training rooms are located on the upper level. The fire station also has a dedicated room for Fire Cadets.

The building has been designed to be highly sustainable. It incorporates rainwater harvesting to provide water for flushing toilets and for vehicle washing. On site electricity generation is provided through a large array of PV cells on the roof with solar hot water cells to reduce energy use in heating water. The accommodation block has a green roof to support biodiversity and minimise the impact of the new building on its surroundings.

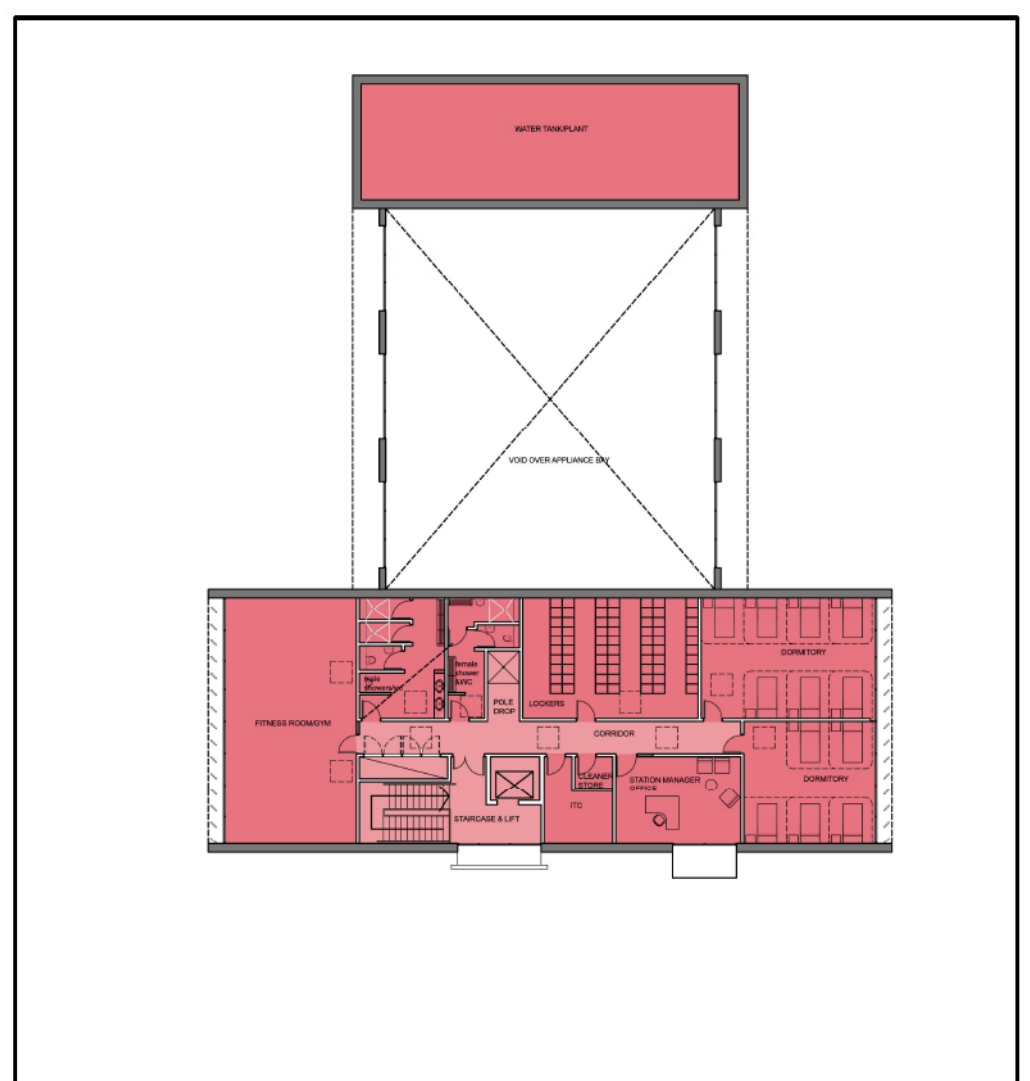




SITE PLAN



GROUND FLOOR PLAN



FIRST FLOOR PLAN