

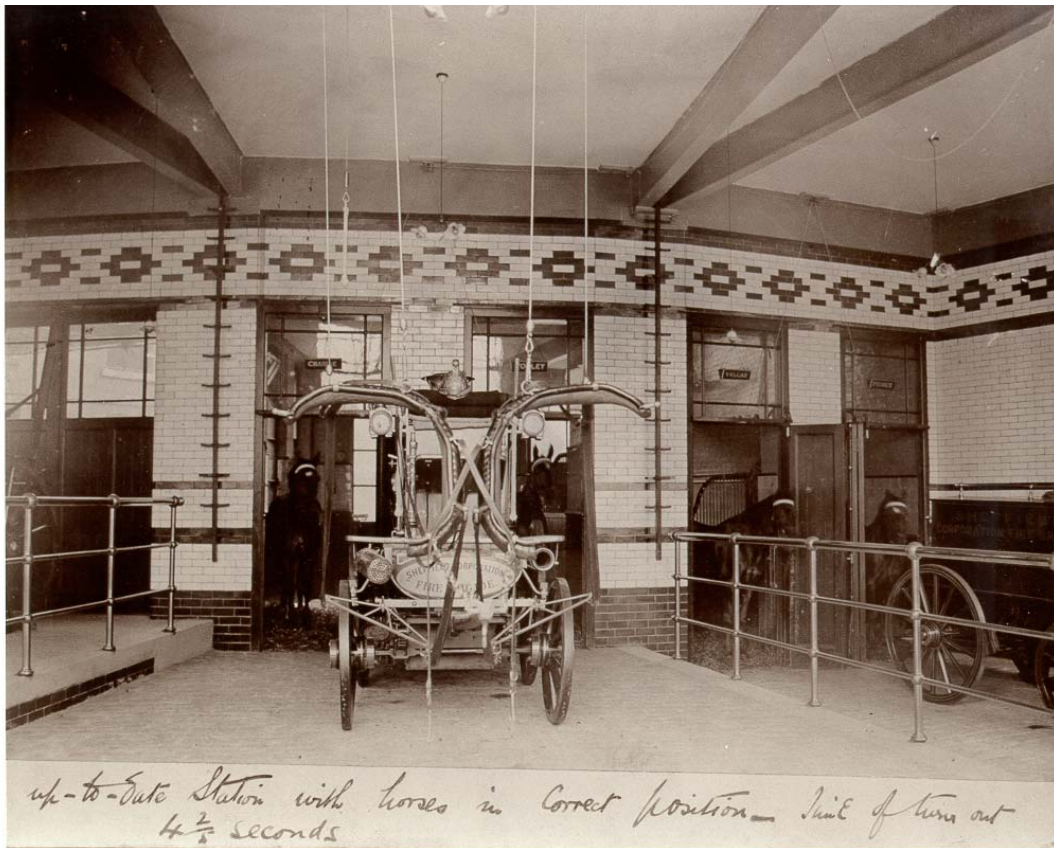
The Fire Police Museum Sheffield



Since opening in 1984 the museum has evolved into one of the largest and most respected in Europe, and enjoys an international following, welcoming visitors and enthusiasts from all over the world. Situated in the heart of the city, ten minutes drive from junction 34 of the M1, or ten minutes walk from the Rail/Bus Interchange, the museum is very convenient to reach from all parts of the country.

The museum is housed in Sheffield's first purpose-built Police/Fire station which was opened in September 1900. By some quirk of fate it has survived in almost 'as built' condition, providing the perfect and authentic setting so much admired today.

The Engine House and Courtyard house a very varied and representative collection of fire appliances.



The first floor contains the two main display rooms, each dedicated to a special theme. The main display room contains a vast collection of artefacts from the British Isles, and covers the period the 16th century to the end of WWII. The other room houses possibly the finest collection of items from all over the world, to be seen in the UK. They have been given to the museum by visiting fire-fighters, perusal of exhibits will show just how internationally famous the museum is and the high regard it enjoys.

The top floor comprises rooms each with a different theme; breathing apparatus, fireman's bedroom (in 1900 the single men lived on 'the job'), a fire scene portrays the grim sight outside a burning house and shows victims being rescued. A very large model railway illustrates various accidents and other incidents with the emergency services in attendance.

Since 1997 the South Yorkshire Police collection has been housed in the museum and adds greatly to the interest for visitors.

From the outset the museum has been entirely managed and run by volunteers, and receives no regular outside funding whatsoever. In 1998 the award for "Best Volunteer-run Museum" was won against all comers in the Yorkshire-Humberside region.

Throughout this period sight has not been lost of our primary objective of promoting Fire Safety/Prevention, especially amongst young people.

The museum is open every Sunday and Bank Holiday Monday throughout the year, 11am to 5pm.

Special arrangements exist for pre-booked school/group visits, full details of these and the many other facilities offered by the museum are available on request, give us a call on **0114 249 1999** or write to us at **Fire Police Museum (Sheffield), The Old Fire Station, West Bar, Sheffield, S3 8PT.**